

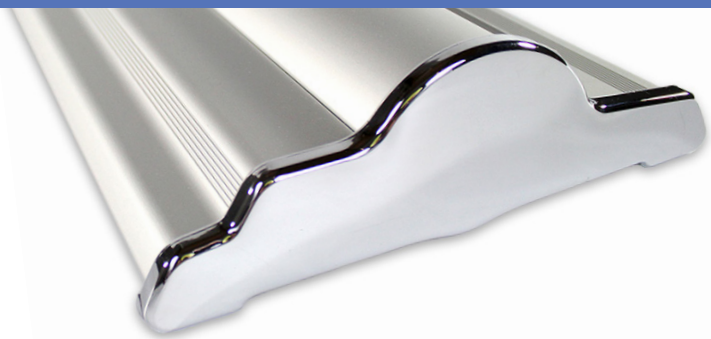
# SILVERSTEP® RETRACTABLE BANNER STAND 24"

RETRACTABLE BANNER STANDS

PRODUCT CODE: SS24



On frame On graphic



## PRODUCT DESCRIPTION

Durable and uniquely designed, this aluminum stand is the perfect combination of versatility, appeal, and affordability.

DISPLAY DIMENSION	25.5" W x 9.5" H x 3" D
-------------------	-------------------------

GRAPHIC DIMENSIONS	24" W x 85" to 92" H
--------------------	----------------------

## GRAPHIC MATERIAL

Super Flat Vinyl or Fabric

## GRAPHIC FINISHING

5" Bleed at the bottom

## DISPLAY CONSTRUCTION

Sturdy Aluminum Construction

## SHIPPING WEIGHTS & DIMENSIONS

SINGLE BOX - 1 Unit

Shipping Weight	12 lbs (stand only) 13 lbs (frame and graphic)
-----------------	---

Shipping Dimensions	31" H x 13" W x 6" D
---------------------	----------------------

MASTER BOX - 4 Units

Shipping Weight	51 lbs (stand only) 52 lbs (frame and graphic)
-----------------	---

Shipping Dimensions	30" H x 27" W x 12" D
---------------------	-----------------------

## LARGE QUANTITY FREIGHT

Master Box - Freight Shipping	12 boxes per 48" L x 40" W x 42" H skids
-------------------------------	--

Master Box - Freight Weight	153 lbs (frame only) 156 lbs (frame & graphic)
-----------------------------	---

## GRAPHIC TURN AROUND TIME

2 to 3 business days after proof approval

## AVAILABLE ACCESSORIES

Silver Clamp Light (35 Watts)	Silver Clamp Light LED
-------------------------------	------------------------

Silver Light (50 Watts)	Black Light (50 Watts)
-------------------------	------------------------

Silverstep Magnetic Connector	
-------------------------------	--

## AVAILABILITY

CA and PA



Black Base (Optional)



Black Clamp Bar (Optional for Super Flat Vinyl)



Silverstep Magnetic Connector (Optional)



Black Hook & Loop Bar (Optional for Fabric)



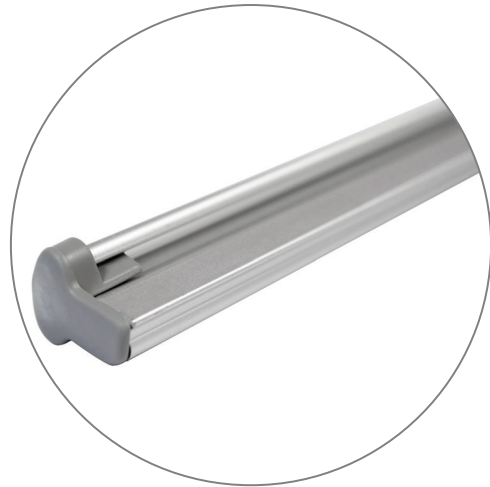
Silver Hook & Loop Bar (Optional for Fabric)



PARTS LIST



Qty 1 - Silverstep Stand



Qty 1 - Clamp Bar



Qty 1 - Telescopic Support Pole



Qty 1 - Silver Travel Bag

# SILVERSTEP® RETRACTABLE BANNER STAND 24"

RETRACTABLE BANNER STANDS

PRODUCT CODE: SS24

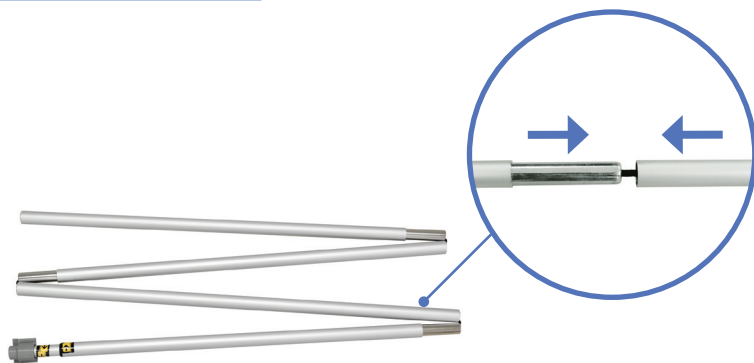
## SET UP INSTRUCTIONS

### Prepare Banner Stand

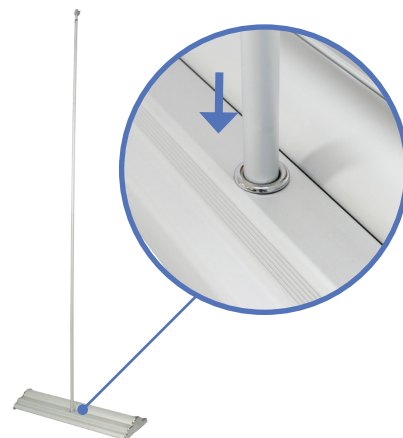


a. Remove Silverstep Stand out of bag.

### Install Telescopic Pole

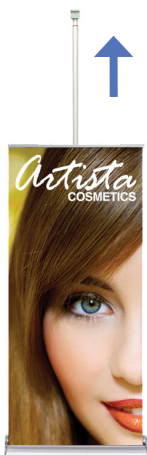


a. Assemble telescopic pole.



b. Insert telescopic pole into hole of the base stand.

### Pull Up Banner



a. Pull banner out of base.



b. Attach telescopic pole to the clamp bar.  
Adjust pole to desired height.



c. Complete stand.



# SILVERSTEP® RETRACTABLE BANNER STAND 24"

RETRACTABLE BANNER STANDS

PRODUCT CODE: SS24

## SET UP INSTRUCTIONS

### Install Magnetic Connector



a. Pull off end caps from Silverstep.



b. Push connector piece until it locks in position.



c. Connect another Silverstep onto it.

### Complete Connection

