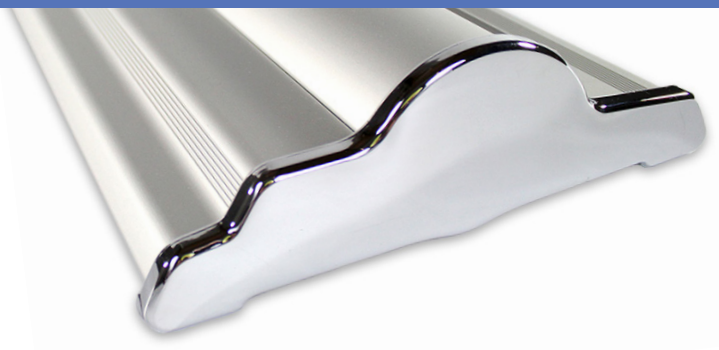


# SILVERSTEP® RETRACTABLE BANNER STAND 36"

RETRACTABLE BANNER STANDS  
PRODUCT CODE: SS36



On frame On graphic



## PRODUCT DESCRIPTION

Durable and uniquely designed, this aluminum stand is the perfect combination of versatility, appeal, and affordability.

DISPLAY DIMENSION	37.5" W x 9.5" H x 3" D
GRAPHIC DIMENSIONS	36" W x 69" to 92" H

## GRAPHIC MATERIAL

Super Flat Vinyl or Fabric

## GRAPHIC FINISHING

5" Bleed at the bottom

## DISPLAY CONSTRUCTION

Sturdy Aluminum Construction

## SHIPPING WEIGHTS & DIMENSIONS

SINGLE BOX - 1 Unit

Shipping Weight	17 lbs (stand only) 18 lbs (frame and graphic)
Shipping Dimensions	41" H x 13" W x 5" D

MASTER BOX - 4 Units

Shipping Weight	64 lbs (stand only) 65 lbs (frame and graphic)
Shipping Dimensions	42" H x 26" W x 10" D

## LARGE QUANTITY FREIGHT

Master Box - Freight Shipping	12 boxes per 48" L x 40" W x 52" H skids
Master Box - Freight Weight	384 lbs (frame only) 390 lbs (frame & graphic)

## GRAPHIC TURN AROUND TIME

2 to 3 business days after proof approval

## AVAILABLE ACCESSORIES

Silver Clamp Light (35 Watts)	Silver Clamp Light LED
Silver Light (50 Watts)	Black Light (50 Watts)
Silverstep Magnetic Connector	

AVAILABILITY	CA and PA
--------------	-----------



Black Base  
(Optional)



Black Clamp Bar  
(Optional for Super Flat Vinyl)



Silverstep Magnetic Connector  
(Optional)



Black Hook & Loop Bar  
(Optional for Fabric)



Silver Hook & Loop Bar  
(Optional for Fabric)



Silverstep Magnetic Connector  
(Optional)

## PARTS LIST



Qty 1 - Silverstep Stand



Qty 1 - Clamp Bar



Qty 1 - Telescopic Support Pole



Qty 1 - Silver Travel Bag

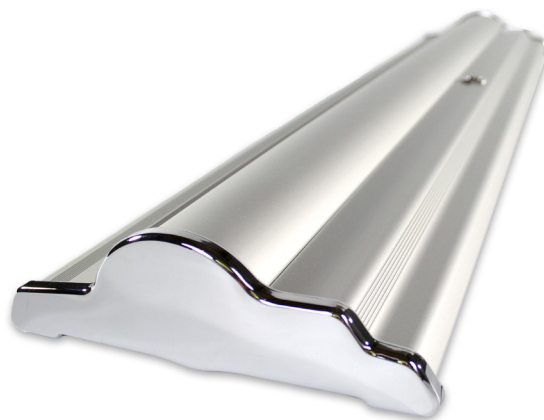
# SILVERSTEP® RETRACTABLE BANNER STAND 36"

RETRACTABLE BANNER STANDS

PRODUCT CODE: SS36

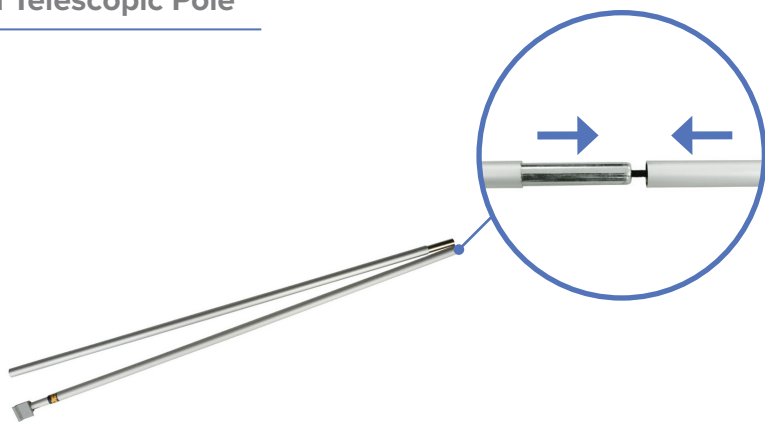
## SET UP INSTRUCTIONS

### Prepare Banner Stand

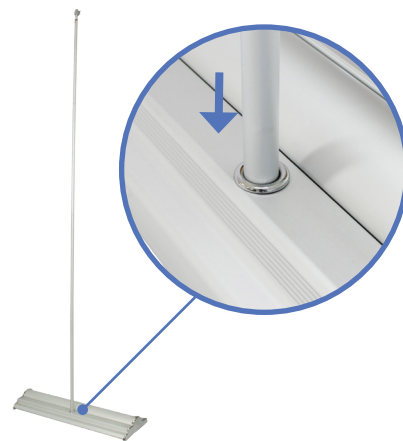


a. Remove Silverstep Stand out of bag.

### Install Telescopic Pole

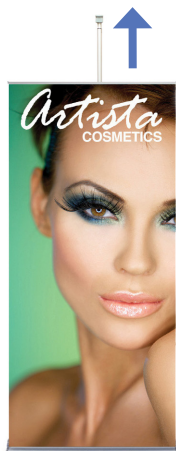


a. Assemble telescopic pole.



b. Insert telescopic pole into hole of the base stand.

### Pull Up Banner



a. Pull banner out of base.



b. Attach telescopic pole to the clamp bar.  
Adjust pole to desired height.



c. Complete stand.

# SILVERSTEP® RETRACTABLE BANNER STAND 36"

RETRACTABLE BANNER STANDS

PRODUCT CODE: SS36

## SET UP INSTRUCTIONS

### Install Magnetic Connector



a. Pull off end caps from Silverstep.



b. Push connector piece until it locks in position.



c. Connect another Silverstep onto it.

### Complete Connection

